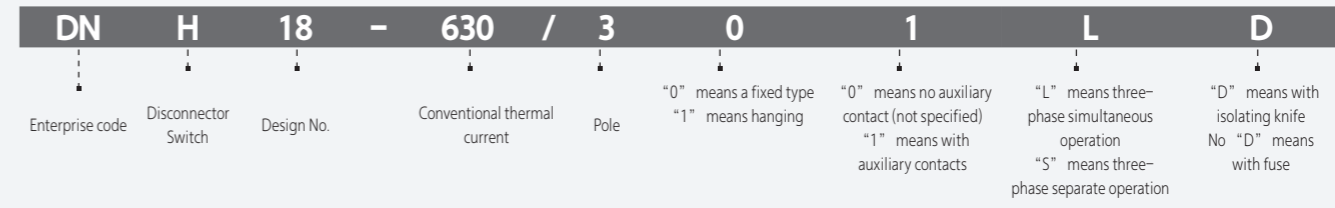


DNH18 Vertical Fuse Switch Disconnecter Technical Parameters																
		DNH18-160			DNH18-250			DNH18-400			DNH18-630					
Electrical parameter	With fuse link	Rated operating voltage	Ue	V	AC400	AC500	AC690	AC400	AC500	AC690	AC400	AC500	AC690	AC400	AC500	AC690
		Rated operating current	Ie	A	160	125	100	250	250	200	400	400	315	630	630	500
		Conventional thermal current	Ith	A	160	125	100	250	250	200	400	400	315	630	630	500
		Utilization Category			AC-23B	AC-23B	AC-22B	AC-23B	AC-22B	AC-21B	AC-23B	AC-22B	AC-21B	AC-23B	AC-22B	AC-21B
		Rated limited short-circuit current	Iq	kA		50		100	100	50	100	100	50	100	100	50
		Rated insulation voltage	Ui	V		1000		1000			1000			1000		
		Rated impulse withstand voltage	Uimp	kV		8		12			12			12		
		Rated frequency		Hz		50/60		50/60			50/60			50/60		
		Electrical endurance times		second		200		200			200			200		
	With copper link	Rated operating voltage	Ue	V		\	\	AC500	\	\	AC500	\	\	AC500	\	\
		Rated operating current	Ie	A		\	\	250	\	\	400	\	\	630	\	\
		Conventional thermal current	Ith	A		\	\	250	\	\	400	\	\	630	\	\
		Utilization Category				\	\	AC-23B	\	\	AC-23B	\	\	AC-23B	\	\
		Rated limited short-circuit current	Icw	kA		\	\	12	\	\	12	\	\	12	\	\
		Rated insulation voltage	Ui	V		\	\	1000	\	\	1000	\	\	1000	\	\
		Rated impulse withstand voltage	Uimp	kV		\	\	12	\	\	12	\	\	12	\	\
		Rated frequency		Hz		\	\	50/60	\	\	50/60	\	\	50/60	\	\
		Electrical endurance Times		second		\	\	200	\	\	200	\	\	200	\	\
Fuse	Fuse size (RT16NTNH) GB/T13539.2 IEC 60269-2				00		1			2			3			
	Operating current	In	A	160	125	100	250	250	200	400	400	315	630	630	500	
	Power loss	P	W	12	12	12	18	23	32	28	34	45	40	48	60	
Mechanism	Mechanical endurance times		second		1400		1400			800	800	1400			800	
	Busbar spacing		mm		185		185			185			185			
Protection	Frontal	On			IP20		IP20			IP20			IP20			
		Off			IP30		IP30			IP30			IP30			
Other	Electronic Fuse Monitor (EFM)				Can be added		Can be added			Can be added			Can be added			
	Signal feedback for opening and closing the switch (micro switch)				Can be added		Can be added			Can be added			Can be added			
Working conditions	Ambient temperature		°C												-5~+55	
	Working mode														Continuous operation	
	Operation														Handle	
	Installation form														Vertical	
	Sea level		Meter												≤2000	
	Pollution degree														3	
Overvoltage category					III					IV						

DNH18 Vertical Switch Disconnecter Technical Parameters																
		DNH18-1000			DNH18-630x2			DNH18-1000x2								
Electrical parameter	With fuse link	Rated operating voltage	Ue	V		\		\		\		\		\		
		Rated operating current	Ie	A		\		\		\		\		\		
		Conventional thermal current	Ith	A		\		\		\		\		\		
		Utilization Category				\		\		\		\		\		
		Rated limited short-circuit current	Iq	kA		\		\		\		\		\		
		Rated insulation voltage	Ui	V		\		\		\		\		\		
		Rated impulse withstand voltage	Uimp	kV		\		\		\		\		\		
		Rated frequency		Hz		\		\		\		\		\		
		Electrical endurance times		second		\		\		\		\		\		
	With copper link	Rated operating voltage	Ue	V		AC500		AC500			AC500			AC500		
		Rated operating current	Ie	A		\	1000	\	\	1250	\	\	2000	\	\	
		Conventional thermal current	Ith	A		\	1000	\	\	1250	\	\	2000	\	\	
		Utilization Category				\	AC-21B	\	\	AC-21B	\	\	AC-21B	\	\	
		Rated limited short-circuit current	Icw	kA		\	15, 25(special structure)	\	\	15	\	\	25	\	\	
		Rated insulation voltage	Ui	V		\	1000	\	\	1000	\	\	1000	\	\	
		Rated impulse withstand voltage	Uimp	kV		\	12	\	\	12	\	\	12	\	\	
		Rated frequency		Hz		\	50/60	\	\	50/60	\	\	50/60	\	\	
		Electrical endurance Times		second		\	100	\	\	100	\	\	100	\	\	
Fuse	Fuse size (RT16NTNH) GB/T13539.2 IEC 60269-2				\		\		\		\		\			
	Operating current	In	A		\		\		\		\		\			
	Power loss	P	W		\		\		\		\		\			
Mechanism	Mechanical endurance times		second		500		500			500			500			
	Busbar spacing		mm		185		185			185			185			
Protection	Frontal	On			IP20		IP20			IP20			IP20			
		Off			IP30		IP30			IP30			IP30			
Other	Electronic Fuse Monitor (EFM)				Can be added		Can be added			Can be added			Can be added			
	Signal feedback for opening and closing the switch (micro switch)				Can be added		Can be added			Can be added			Can be added			
Working conditions	Ambient temperature		°C												-5~+55	
	Working mode														Continuous operation	
	Operation														Handle	
	Installation form														Vertical	
	Sea level		Meter												≤2000	
	Pollution degree														3	
Overvoltage category														IV		



**DNH18 Vertical Fuse Switch Disconnecter Accessories Table**

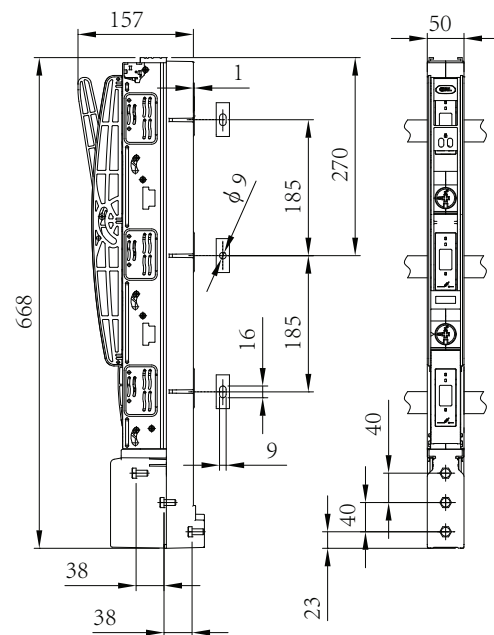
Type	Item No.	Appearance	Name	Part No.	Conductor cross section min.-max. (mm <sup>2</sup> )	Torque (N·m)	Quantity (per unit)	Specifications for the matched vertical fuse switch disconnecter	Standard	Optional
Product accessories	1.1		Position block	—	—	—	4	DNH18-250-630	●	
	1.2		Insulation board	—	—	—	2		●	
	1.3		Multi-function meter	DN57020	—	—	1		●	
	1.4		Current transformer (class 0.5)	Choose the switch model no. base on customer's ampere in demand.	—	—	3		●	
	1.5		Electronic Fuse Monitor (EFM)	DN57001	—	—	1		DNH18-160-630	●
Mounting terminal	2.1		Hanging terminal	DN54251	—	8	3	DNH18-160		●
	2.2		Hanging terminal	DN54253	—	30	3	DNH18-250-630		●
Wiring terminal	3.1	Matching cable lug or busbar	M8 bolt	-----	16-70	12	3	DNH18-160		●
	3.2	Matching cable lug or busbar	M10 bolt	-----	35-240	30	3	DNH18-250		●
	3.3	Matching cable lug or busbar	M10 bolt	-----	35-240	30	3	DNH18-400		●
	3.4	Matching cable lug or busbar	M12 bolt	-----	70-240	35	3	DNH18-630		●
	3.5		Wiring terminal	DN54224	16-70 s(r) 16-70 s(s) 16-70 f+AE	3	3	DNH18-160		●
	3.6		Wiring terminal	DN54267	35-70 s(r) 16-150 s(s) 16-185sol(s)	25	3	DNH18-250		●
	3.7		Wiring terminal(V-shaped)	DN54275	50-300s(r) 50-240s(s) 50-300sol(s)	30	3	DNH18-250-630		●
	3.8		Horizontal double core wiring terminal	DN54276	2*185-240	30	1	DNH18-630		●
	3.9		Vertical double core wiring terminal					DNH18-630		●

**DNH18 Vertical Fuse Switch Disconnecter Selection Table**

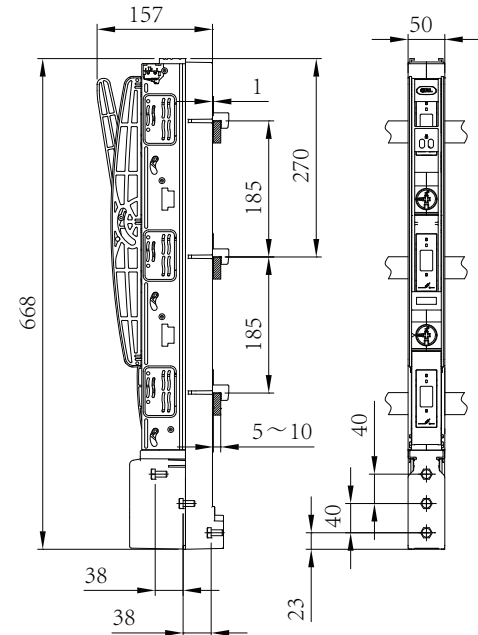
No.	Part No.	Pole	Current	System	Size	Adaptation	Remarks	
1	DNH18-160/3L	3	160A	185	668 × 50	Fixed installation (drill hole), three-phase synchronous operation and with fuse		
2	DNH18-160/311L	3	160A	185		Hanging installation, with auxiliary contacts, three-phase synchronous operation and with fuse		
3	DNH18-250/3L	3	250A	185	666 × 100	Fixed installation (drill hole), three-phase synchronous operation and with fuse		
4	DNH18-250/3S	3	250A	185		Fixed installation (drill hole), three-phase separate operation and with fuse		
5	DNH18-250/3LD	3	250A	185		Fixed installation (drill hole), three-phase synchronous operation and with fuse isolation knife		
6	DNH18-250/311L	3	250A	185		Fixed installation (drill hole), three-phase synchronous operation and with fuse		
7	DNH18-400/3L	3	400A	185		Fixed installation (drill hole), three-phase synchronous operation and with fuse		
8	DNH18-400/3S	3	400A	185		Fixed installation (drill hole), three-phase separate operation and with fuse		
9	DNH18-400/3LD	3	400A	185		Fixed installation (drill hole), three-phase synchronous operation and with fuse isolation knife		
10	DNH18-400/311L	3	400A	185		Fixed installation (drill hole), three-phase synchronous operation and with fuse		
11	DNH18-630/3L	3	630A	185		Fixed installation (drill hole), three-phase synchronous operation and with fuse		
12	DNH18-630/3S	3	630A	185		Fixed installation (drill hole), three-phase separate operation and with fuse		
13	DNH18-630/3LD	3	630A	185		Fixed installation (drill hole), three-phase synchronous operation and with fuse isolation knife		
14	DNH18-630/311L	3	630A	185		Hanging installation, with auxiliary contacts, three-phase synchronous operation and with fuse.		
Remarks	1. Please refer to the model no. definition of the vertical fuse switch disconnecter to choose the right items in demand.							
	2. Other accessories, such as wiring terminals, please refer to the vertical fuse switch disconnecter accessories list.							

**DNH18-160/3L**

3L Fixed type installation diagram

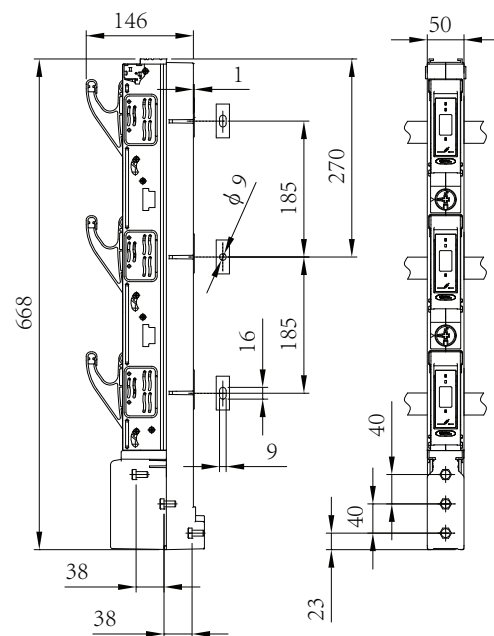


3L Hanging type installation diagram

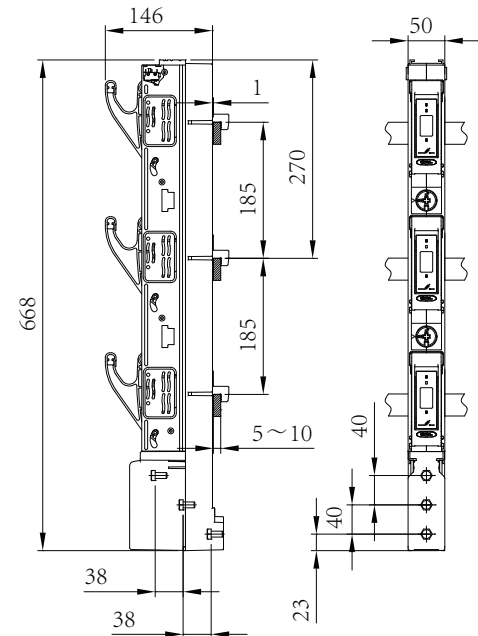


**DNH18-160/3S**

3S Fixed type installation diagram

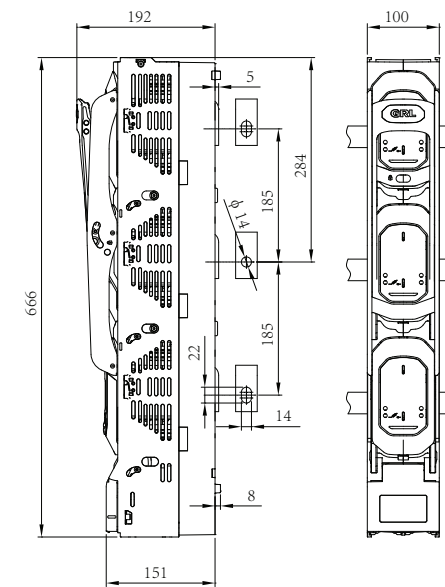


3S Hanging type installation diagram

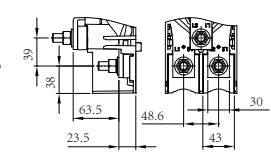


**DNH18-250~630/3L**

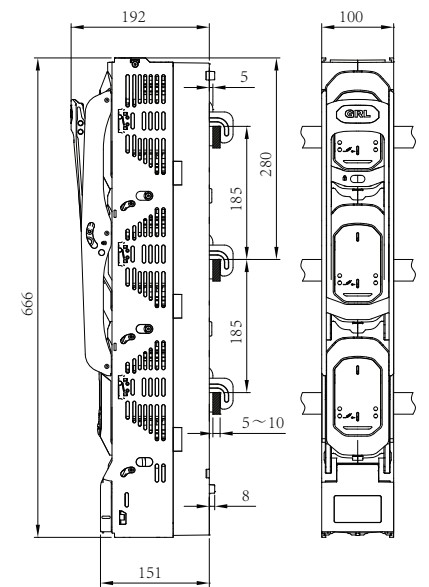
3L Fixed type installation diagram



Wiring terminal clamp size diagram:

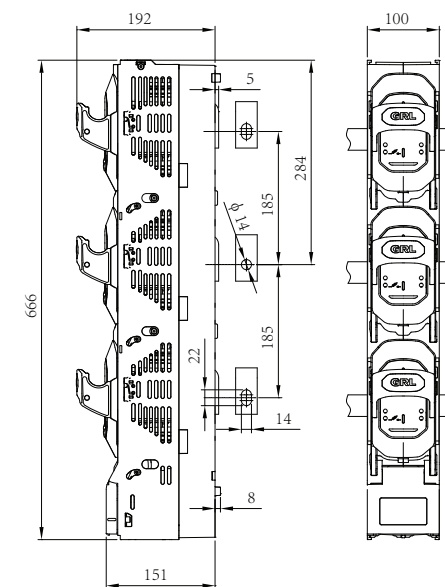


3L Hanging type installation diagram

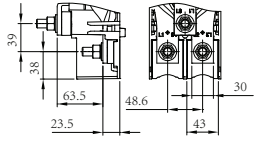


**DNH18-250~630/3S Normal Handle**

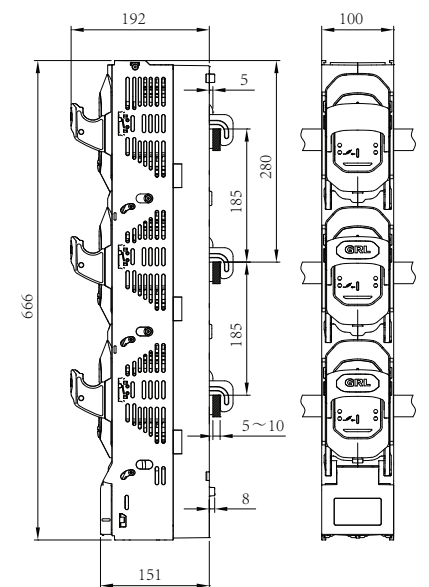
3S Fixed type installation diagram



Wiring terminal diagram

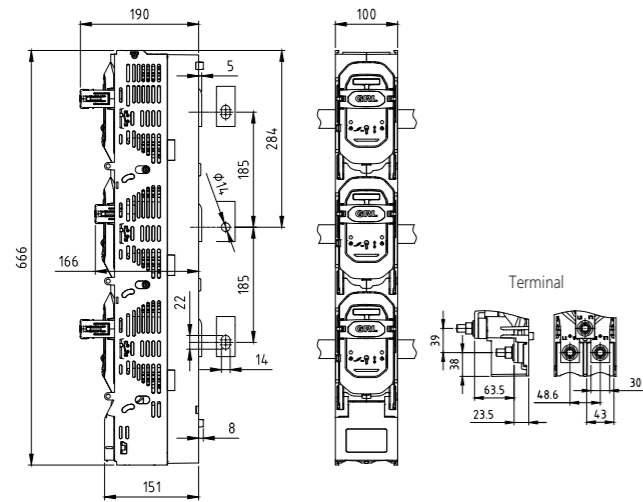


3S Hanging type installation diagram

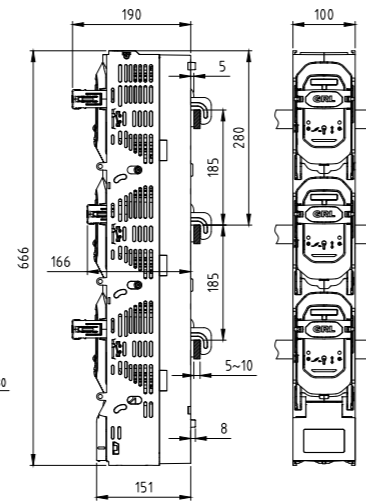


### DNH18-250~630/3S Retractable Handle

3S Fixed type installation diagram

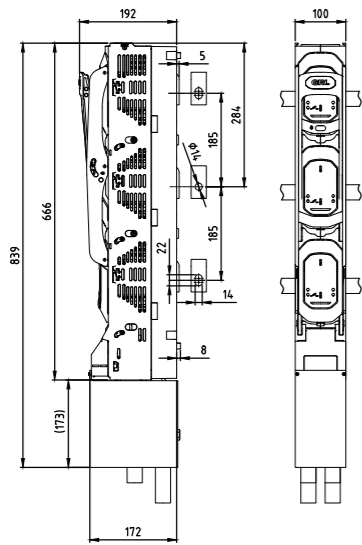


3S Hanging type installation diagram

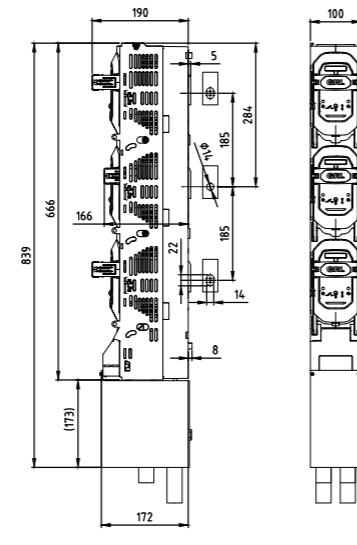


### DNH18-1000/3

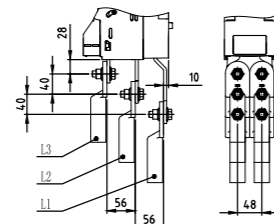
3L Fixed type installation diagram



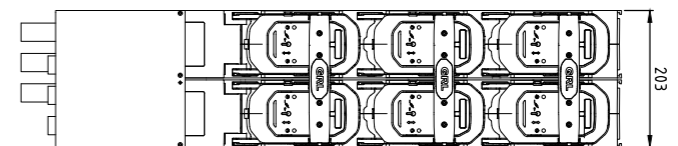
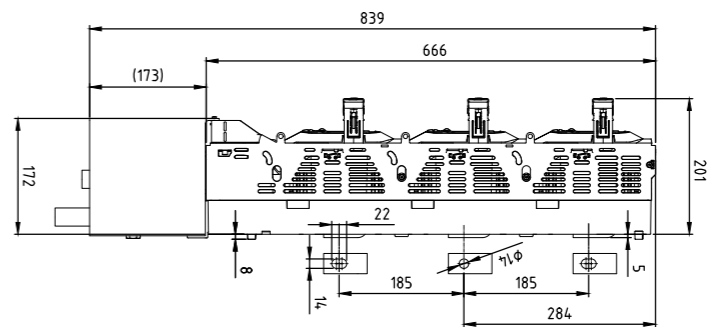
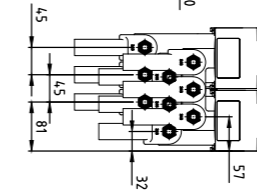
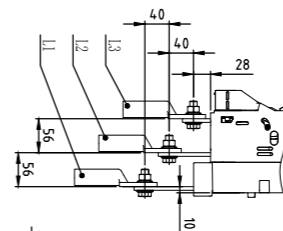
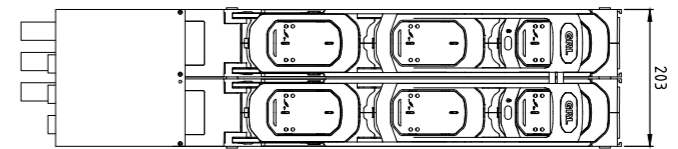
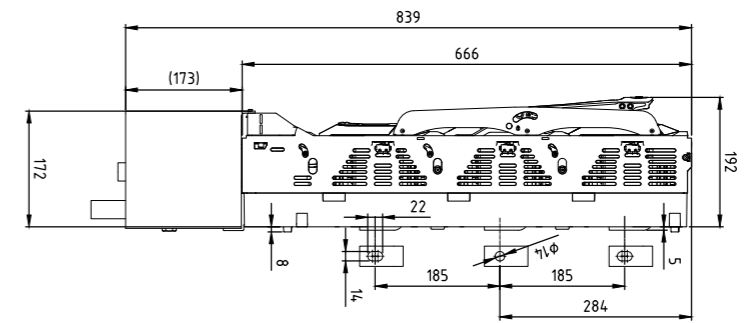
3S Fixed type installation diagram



Terminal



### DNH18-630x2



3L Fixed type installation diagram

3S Fixed type installation diagram